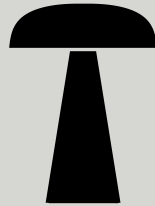


## Instructions

# Como SC53 Space Copenhagen 2020



---

Congratulations on your new Como lamp, designed in 2020 by Space Copenhagen. We hope you will enjoy using this product and follow these instructions to ensure correct installation. If you have any questions or comments, please do not hesitate to contact us by mail at: [info@andtradition.com](mailto:info@andtradition.com)



Please follow this link for an installation video.

**&Tradition®**

# Como SC53

## Space Copenhagen

### 2020

---

Please read these instructions carefully and retain them for future reference to ensure that the product is used correctly. For your own safety, please study each step of this instruction manual before assembly. &Tradition is not responsible for any faults or damages caused by not following these instructions correctly. Do not modify this product in any way.

#### Contents

- A Lamp shade
- B Lamp base
- C Battery compartment (incl. 1 battery)
- D LED G4 1W light bulb
- E Magnetic USB cable

#### Tools needed

- Screwdriver (for replacing batteries)

#### Safety precautions

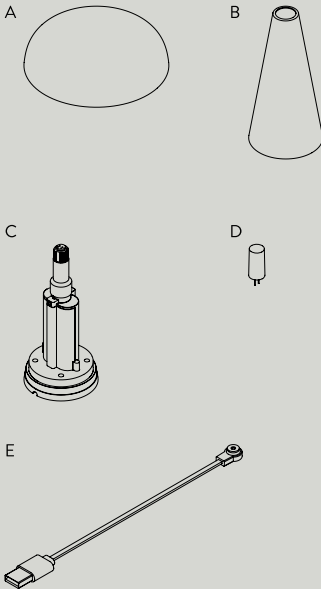
- Dispose of plastic bag from packaging and keep out of children's reach.
- This lamp is for indoor use only. It can be taken outdoors, but must be kept and stored indoors.
- Consult a professionally qualified electrician if in any doubt.
- Do not place the USB cable within reach of small children.
- Batteries must be disposed of according to local environmental rules for waste disposal.
- The light source contained in this lamp should only be replaced by the manufacturer or a qualified professional.

#### Cleaning instructions

- Wipe the surface of the shade with a soft, dry cloth.
- Do not use any abrasive cleaning tools such as steel wool, scouring sponges or stiff brushes.
- Never use strong cleaning agents such as white spirit, turpentine, household glass cleaner or cellulose thinners.

&Tradition will not accept any responsibility for any accidents or injuries that occur due to the incorrect use of USB cable input. The appliance must be disconnected from the mains electrical supply when removing the battery. The battery must be disposed safely before disposal.

For further information, please do not hesitate to contact &Tradition by mail at [info@andtradition.com](mailto:info@andtradition.com).



#### For indoor use

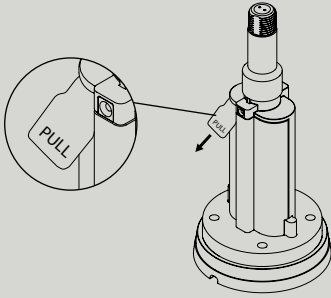
Input 5.0V  $\equiv$  2A USB cable  
G4 Max 1 Watt dimmable LED bulb  
1  $\times$  Rechargeable &Tradition battery

#### Charging time

1 battery: 3.5 hours  
2 batteries: 6 hours

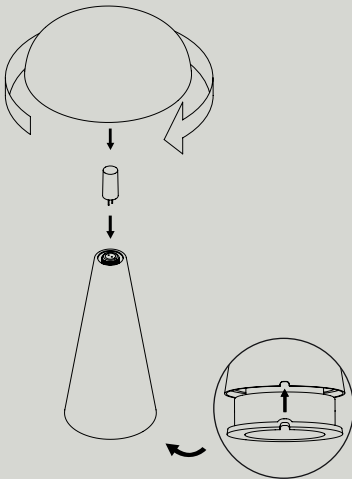
#### Operating time on highest setting

1W LED light bulb 1 battery: 11 hours  
2 batteries: 20 hours



### Step 1

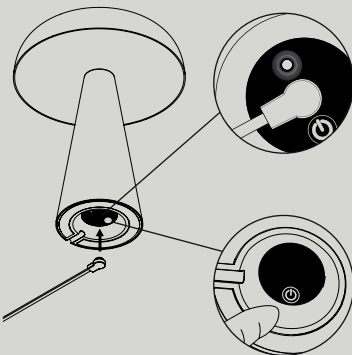
Remove the plastic slip from the battery compartment (C) to activate the battery.



### Step 2

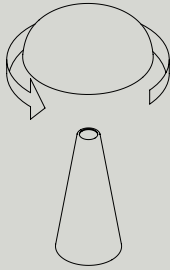
Lower the lamp base (B) onto the battery compartment. Make sure the groove in the battery compartment is aligned with the same groove in the base.

Insert the LED light bulb (D) as per the illustration and carefully lower the lamp shade (A) onto the base, turning clockwise to secure in place.



### Step 3

After assembly, the lamp will need to be charged before use. To do so, plug the magnetic USB cable (E) into the magnetic charging port in the base of the lamp and connect the USB cable to a power supply.

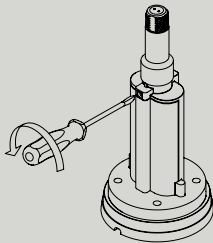
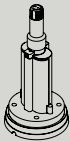


## Replacing the battery

### Step 1

To replace the battery, remove the lamp shade by turning counter clockwise and lift off the shade. Remove the LED light bulb from the battery compartment.

Gently press the top of the light socket until the battery compartment pops out of the lamp base.



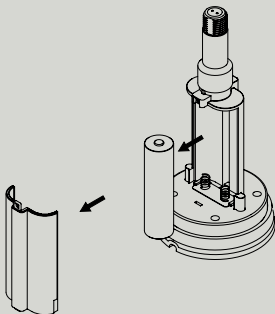
### Step 2

Unscrew the top of the battery compartment by turning the screws counter clockwise and removing the lid.

### Step 3

Take out the battery and replace it with a new battery. Insert the battery correctly by turning the plus and minus poles as stated in the battery compartment.

**Be aware to mount the lid gently by not overturning the screw in the threading.**



Remember to only use official rechargeable batteries from &Tradition. If desired, two batteries can be installed to achieve a longer operation time.

